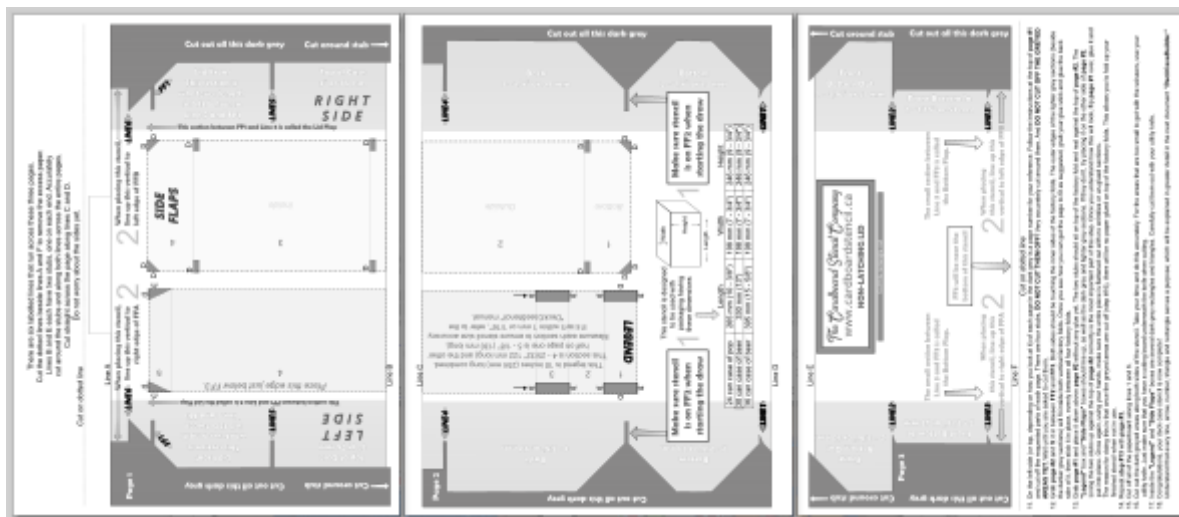


The Cardboard Stencil Company

Instruction Manual Series

Twenty-Four Pop Case Stencil *Twenty-Four Beer Case Stencil* Version 1.0

Today we are going to be making this collapsable 24 pop case stencil from 24 pop case beverage packaging:



With it, you will be able to make a deck case that looks like this:



Beverage Packaging Compatibility

Different beverage packaging comes in different sizes, and those dimensions vary further between pop cases and beer cases of the same size. To make the deck case work with the factory folds already built into the packaging, we created two separate stencils.

As you'll see on the next page:

- The Twenty-Four Pop Case Stencil works with a 24-can case of pop, but not with a 24-can case of beer.
- The Twenty-Four Beer Case Stencil works with a 24-can case of beer, but not with a 24-can case of pop.

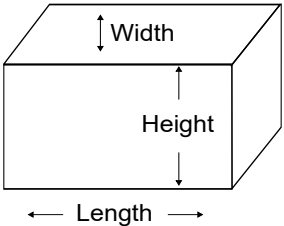
The dimensions just don't match, which is why each stencil is labeled accordingly. Both stencils also support additional case sizes listed directly on the stencil itself. Those dimensions are shown on the next page.

Packaging from smaller than a 20-can case of pop will not work with these two stencils, though you're welcome to experiment. As a side note, we haven't yet found an 18-pack of pop or beer to test. Once we do,

we'll update the manual. In the top-right corner of this manual is a version number. We update this number whenever changes are made, so feel free to check our website at www.cardboardstencil.ca or visit our Facebook page by searching for **The Cardboard Stencil Company**.

To make the **Twenty-Four Pop Case Stencil** and the deck case itself, you will need your favorite beverage packaging with the following dimensions:

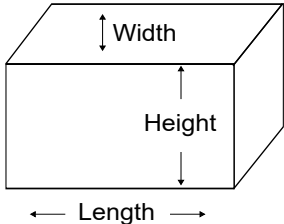
	Length	Width	Height
24 can case of pop	265 mm (10 - 3/8")	198 mm (7 - 3/4")	246 mm (9 - 3/4")
30 can case of beer	330 mm (13")	198 mm (7 - 3/4")	246 mm (9 - 3/4")
36 can case of beer	395 mm (15 - 5/8")	198 mm (7 - 3/4")	246 mm (9 - 3/4")



The dimensions of various pop and beer cases are compatible with this stencil and deck case design. If you'd prefer to make the beer version instead, print the **DeckCaseBuilderStencil24Beer** document. It works with this manual too.

With it, you will need to use your favorite beverage packaging with the following dimensions:

	Length	Width	Height
20 can case of pop	264 mm (10 - 1/2")	120 mm (4 - 3/4")	329 mm (13")
24 can case of beer	330 mm (10 - 1/2")	120 mm (4 - 3/4")	395 mm (15 - 9/16")



Making the Twenty-Four Pop Case Stencil

Use beverage packaging that matches the dimensions listed on the stencil. These measurements represent the majority of case sizes used by major pop and beer manufacturers in North America. If you have packaging not listed—especially if you're outside North America—send us a photo of the case along with accurate dimensions in both centimeters and inches. We'll see if it can be converted into a stencil and offered free of charge. While we can't guarantee compatibility, we're happy to try. Reminder: Packaging smaller than a 20-can case of pop will not work with these stencil designs.

Sharing This Document

This is a free series of documents you're welcome to share with anyone or post online. All we ask is that you do not alter any part of the instructions or stencils. If you're missing any files, visit www.cardboardstencil.ca and look for the "Free Downloads" section.

How This Works

Before building your first deck case, you'll need to create a stencil. This manual explains how. The remaining steps are found in the three-page stencil document you'll also print. Once your stencil is ready, use the **DeckCaseBuilderInstructions** manual to build your first deck case.

Supplies Needed

- Ruler (centimeters and inches)
- Pen or pencil
- Scissors
- Utility knife
- Glue stick
- Cutting board (to protect your work surface)

Printing Instructions

1. Open the PDF: **DeckCaseBuilderStencil24Pop** or **DeckCaseBuilderStencil24Beer**. For either stencil, choose between **NSSS (Non/Single Sleeved Decks)** or **DS (Double Sleeved Decks)**. The double sleeved decks and cases are 4 mm wider than the non/single sleeved versions.

Use Adobe Acrobat Reader or Foxit PDF Reader for best results.

Use 8.5 x 11 inch paper only.

2. Set the print scale to 100%.

Look for “Actual Size” or “Scale: 100%” in your print settings.

Disable any “Fit to Page” or “Shrink Oversized Pages” options.

3. Enable full-page printing.

Adjust margins or layout settings to use the entire printable area. Look for “Borderless Printing” or “Edge-to-Edge” if available.

4. Print single-sided only.

5. Choose black and white printing. This conserves color ink and improves stencil clarity.

6. Print one stencil first to verify sizing. Don’t print in bulk until sizing is confirmed. Put a ruler on the rectangle in the stencil. Compare the measured dimensions to the written dimensions inside the rectangle.

- If they match: Your stencil is accurate. Save your printer settings for future use.
- If they don’t match: Your box will be the wrong size. Recheck Steps 2–4 and adjust your settings.
- If sizing still fails: Try printing from a different PDF viewer or computer.

Size Check

On page 2, find the rectangle labeled “**Legend.**” Measure its dimensions:

- If the measured size matches the printed numbers, your stencil is accurate.
- If not, revisit Steps 2–4 and adjust your printer settings.

If you’re still having trouble, we unfortunately can’t troubleshoot every printer model. There are too many variations in software and hardware. We’ve tested all our stencils for accuracy, so if your print is off by more than 1 mm, the issue is likely with your printer. Consider visiting a print shop or public library.

Prepare Your Packaging

1. Choose packaging that matches the stencil dimensions listed earlier.
2. Carefully separate glued sections without tearing. Place the packaging graphics-side down. You should now see the factory folds—creases built into the packaging during manufacturing.

There are:

- Four horizontal folds
- Two vertical folds

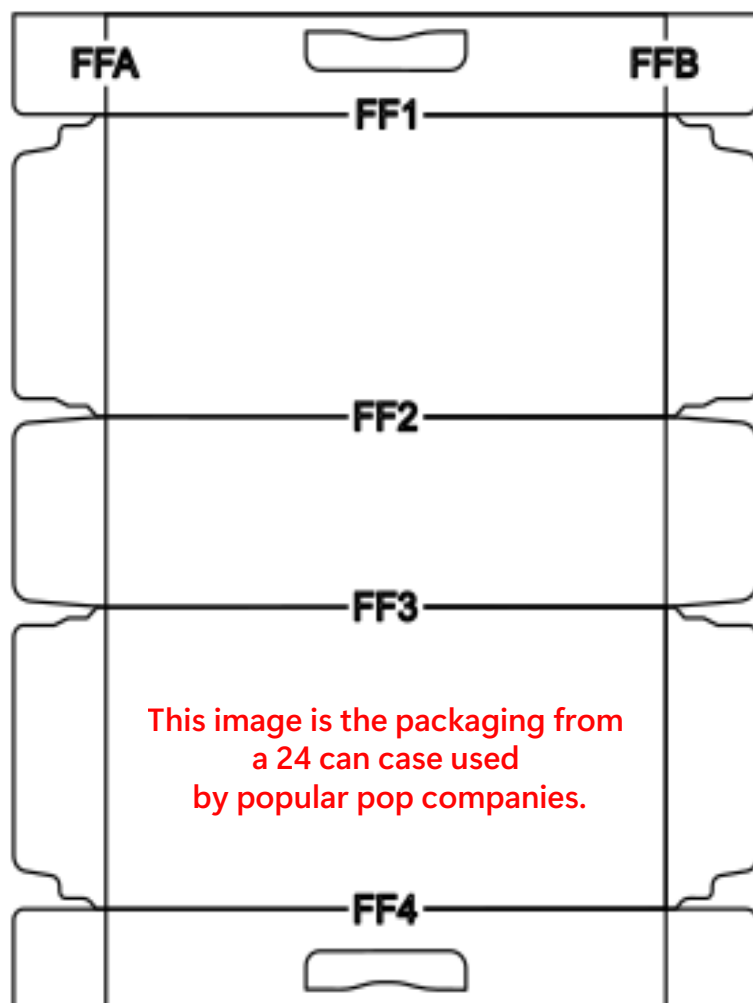
These are labeled in the diagram and will be referenced in the next steps.

Follow the Steps Carefully

1. Follow each step in order.
2. Do not cut or glue anything until instructed. Some steps must be done in sequence, or you may need to start over.
3. The remaining instructions are found in the stencil pages you printed either called [DeckCaseStencil24Beer](#) or [DeckCaseStencil24Pop](#).

Build Your Deck Box

Visit our website to download all instructions and



stencils 100% free of charge. You'll learn how to build deck boxes for your favorite trading card games using food and drink packaging. Choose from 22 different deck box sizes, ranging from 40 to 120 cards—non-sleeved, single-sleeved, and double-sleeved. You never have to buy another deck box again. You're only limited by your imagination!



The Cardboard Stencil Company

Download everything to create this deck case 100% free of charge.

Learn to how to make cool deck boxes for your favorite trading card games and with your favorite food and drink packaging!

Purchase all 22 different deck box size stencils from 40 to 120 cards, with non-sleeved, single sleeved and double sleeved options!

Never have to buy another deck box again!

Visit us at www.cardboardstencil.ca or on Facebook, YouTube and more.

We have all kinds of videos showing you how to make everything that we have to offer, including this deck case.