

The Cardboard Stencil Company

Instruction Manual Series

Twenty-Four Pop Case & Twenty-Four Beer Case Version 1.0

Currently there are three manuals for making the two different deck case stencils in our series. The first manual called **DeckCaseBuilderStencilInstructions** is your starting point. It introduces you to the process and walks through the beginning stages of creating your first stencil. From there you can start building either stencil by choosing the **DeckCaseBuilderStencil24Pop** manual with some instructions included or the **DeckCaseBuilderStencil24Beer** manual with some instructions as well. Once you've made your stencil (either one), you are ready for this manual. This manual guides you through the basics of deck cases and then actually creating one.

There is a bit to learn first, helping you understand the bigger picture of the subject, then we get started. You can also watch videos for stencil and deck creation on our YouTube channel called **The Cardboard Stencil Company**.

Different Sized Packaging

If you look on page two of your three page stencil (or the next page), there is a table with either two (24 Beer Stencil) or three (24 Pop Stencil) possible beverage packaging options to create a deck case with. The 24 Pop Stencil and case can be made with the packaging from a 24 can pop case or else a 30 or 36 can beer case.

The 24 Beer stencil and case can be made with packaging from either a 24 can beer case or 20 can case of pop. I have yet to find an 18 can pop or beer case, to see where it fits. When I do, I will update this manual. Currently any size smaller than a 20 can case of pop or beer will not work with either stencil. The simple reason being that the factory folds in the packaging just doesn't work in our favour.

But how did they get their names? We call one the "Twenty-Four Pop Case" because it works with a 24 can case of pop, but not with a 24 can case of beer. Which would also explain why the other stencil is called the "Twenty-Four Beer Case," as it will not work with a 24 can case of pop!

Today we are going to be making this deck case from a 24 can case of pop packaging:



Please read through this entire manual before getting started.

But what kind of packaging do I need?

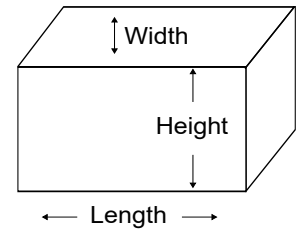
Each deck case is made with the following beverage types and sizes:

"24 cans of pop" stencil

	Length	Width	Height
24 can case of pop	265 mm (10 - 3/8")	198 mm (7 - 3/4")	246 mm (9 - 3/4")
30 can case of beer	330 mm (13")	198 mm (7 - 3/4")	246 mm (9 - 3/4")
36 can case of beer	395 mm (15 - 5/8")	198 mm (7 - 3/4")	246 mm (9 - 3/4")

"24 cans of beer" stencil

	Length	Width	Height
20 can case of pop	264 mm (10 - 1/2")	120 mm (4 - 3/4")	329 mm (13")
24 can case of beer	330 mm (10 - 1/2")	120 mm (4 - 3/4")	395 mm (15 - 9/16")



Now it's time for our disclaimer.

Trading card games are played by youth and adults alike. As such, we mention the use of food, pop and alcohol packaging as options for making deck boxes and cases. This has been a difficult moral dilemma for us. We do not encourage the use of any kind of alcohol related packaging by anyone under the legal drinking age; wherever you live. Please leave that for the adults! If you are under the legal drinking age, **DO NOT USE ANY ALCOHOL RELATED PACKAGING** for any of the stencils, deck boxes or deck cases that can be made with our product.

Sharing This Document

This is a free series of documents that can be given away to anyone you like and shared anywhere on the internet. All we ask is that you keep all of the instructions and stencils as they are and not alter any parts of them in any way, shape or form. If you are missing any of the documents, just go to our website and download them for free (no strings attached). Go to our website at www.cardboardstencil.ca and search for the "free" section at the top of the page.

Have you made your stencil yet?

In order to create your first deck case, you will have needed to already create the stencil. If you haven't, go to our website and download the files [DeckCaseBuilderStencil24Pop](#), [DeckCaseBuilderStencil24Beer](#) and [DeckCaseBuilderStencilInstructions](#). The first two files are three page PDF documents of the stencil with a few additional instructions. The third file offers your introduction and beginning instructions..

The concept behind this deck case design is to use the existing factory folds found in specific beverage packaging as part of the finished design. This eliminates having unwanted factory folds in places they aren't needed and also any unnecessary gluing of pieces together.

While you are welcome to experiment with different sized packaging, for best results, only use the types recommended for this design.

Notice the "version #" at the top of this manual. If we find ways to improve upon this design, we will release updated versions. If you want to be the first to grab these new editions, visit our website and subscribe to any of our social media channels that can be found at the top of our Home page.

Just click on the icon and it will take you there. You can also follow us on our Facebook page called **The Cardboard Stencil Company**.

Let's get started!

You will need the following supplies:

- Ruler
- Pen or pencil
- Scissors
- Liquid glue
- Cutting board (to protect your working surface)
- Two deck boxes full of cards

Round electrical coverplate
 The 24 Pop or 24 Beer stencil that you created
 Something to wipe excess glue on like a rag or paper towel
OPTIONAL: a few small clamps, small pieces of wood

Grab you favorite emptied beverage packaging

1. Carefully separate any glued sections, trying not to rip or tear any parts. It should look like the bigger image to the lower right. We call each crease that has already been manufactured into the packaging a factory fold. In this piece of packaging there are four horizontal factory folds and two vertical ones. They are all labelled. Notice the different names in the image. You will need to know them for the next part of the process.

2. Flip the packaging over and look at the graphics. Decide which section you prefer between FFA and FF2 or FF3 and FF4 (the two red squares in the image to the lower left). Once you have decided, flip the packaging back over again.

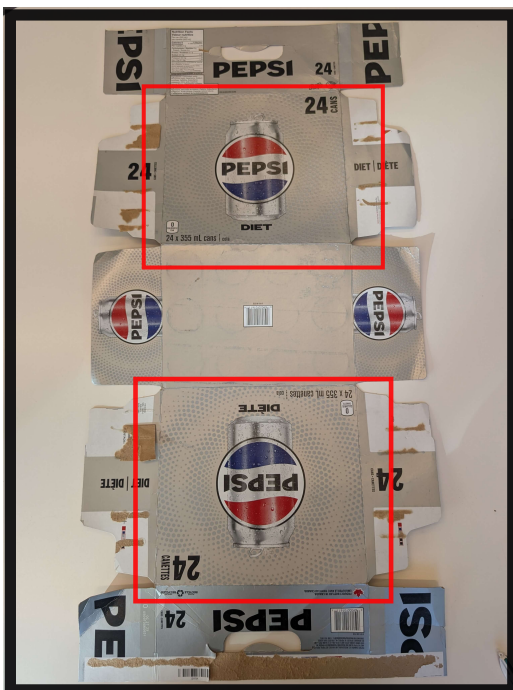
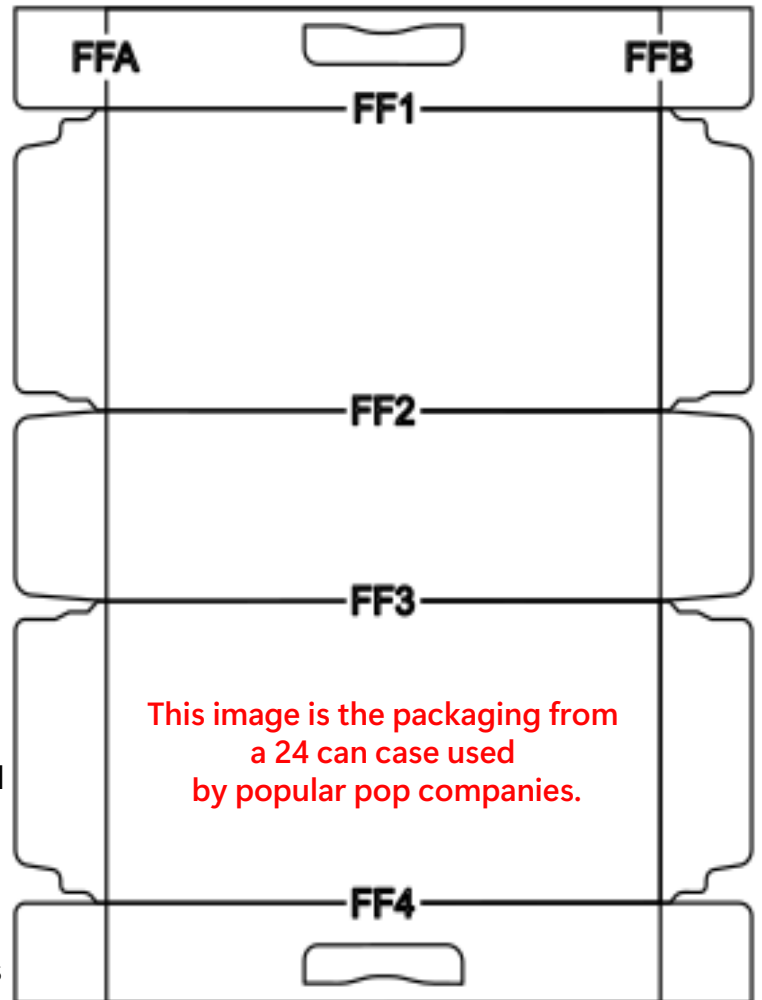
3. Open up your stencil and familiarize yourself with everything that is written on it. You will find that everything on the left side is mirrored on the right side (with a few exceptions). Once you are ready, look at the middle page for the text stating **"Make sure stencil is on FF2 when starting to draw."** It is pointing to a small cut out section of the stencil which will sit on top of FF2. So whether you start tracing on the the left or right side, place that small gap over top of the FF2 crease (you will see FF2 in the gap).

4. Next look at the top corner of the stencil (whichever side you are starting with) and notice the text stating **"When placing this stencil, line up this vertical to the right edge of FFA"** (or left edge of FFB).

Putting FF2 and the small vertical part that the arrow is pointing towards at the locations mentioned

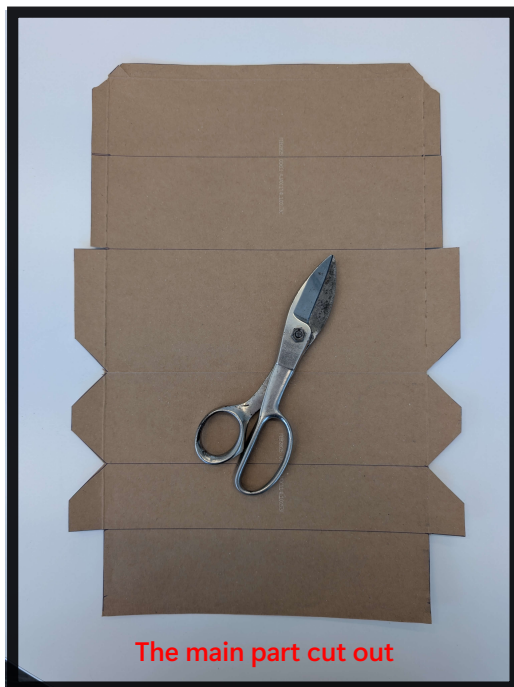
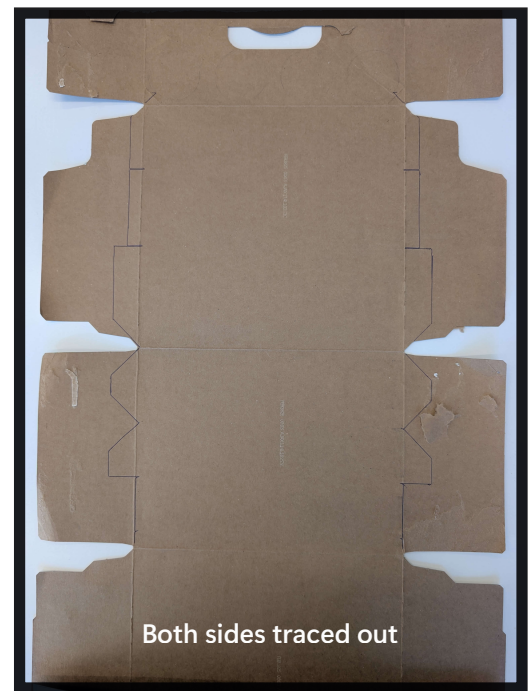
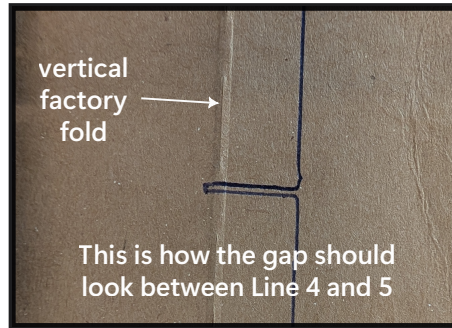
will position the stencil right where it needs to be. FF2 on the stencil will be straddling over top of FF2 on the packaging and the small vertical edge of the top corner of the stencil will be pushed up to the right side of FFA or left side of FFB.

5. Once you have both spots where you want them, do not move the stencil and start tracing down the entire side of the stencil.
 6. Repeat steps 3, 4 and 5 with the other side. Your packaging should look just like the image on the far, top right of the next page.. Make sure that you draw the top and bottom of Line 4 and 5 like



shown in the small image below in the middle. Notice how the ink goes slightly inside the vertical factory fold? That means that the stencil was in too close to the vertical factory fold. Ideally this will finish right on the factory fold instead. You will understand why as the process unfolds.

7. Grab your pen and ruler next. Look at the top left or right of your stencil and notice how Line 6 is under the small vertical part that you lined up with FFA and FFB. Draw a line matching both sides of Line 6 (on your packaging), then repeat with Lines 5, 4, 1 and 2. It should look like the image to the far right, second down. **(Do Lines 5, 4, 1 and the very bottom (below Line 3) instead if doing the 24 Beer stencil). Because of the different dimensions with either of the 24 Beer Case options, the bottom goes below FF3.**
8. Grab your scissors and cut across the top of the packaging on Line 6. Then cut off the entire bottom part of the packaging on FF3 **(or the bottom of the Bottom Flap if doing the 24 Beer case).** Make both cuts very neat because you will need one of them and if you make a mistake, the other one too.
9. Cut along your traced lines on both sides. Once finished it should look like the image on the lower left.
10. Let's go back to Line 3 at the bottom of the packaging. There should be a small mark on the left and right side less than an inch from the bottom. It is the same spot that the pen is pointing to in the image to the right **(or just below Line 3 in the 24 Beer Case).** Cut along each of those marks inward about one or two millimetres and then cut up from the bottom of the packaging the same distance in. You should now have a small rectangle sized chunk removed on the bottom left and right corners.

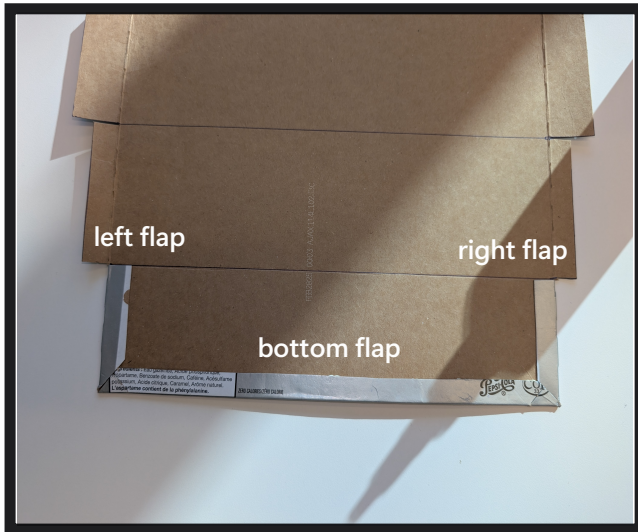


11. Now it's time to start doing some creasing. Turn your packaging sideways or however you like and place your cutting board underneath one of those lines that you drew with the ruler.
12. Grab a small scrap piece of packaging, a cloth or glove and put it between your hand and the coverplate. Remember, do not use the two big pieces that you cut off from the top and bottom for this, as you will need them shortly.
Pushing down as hard as you can, roll the electrical coverplate along the entire length of Line 5,4,2 and 1 **(Lines 5, 4 and 1 for the 24 Beer Case).** Keep your new crease as straight as possible. Once

again, pushing down as hard as you can. If you have never attempted this before, doing so creates a factory fold of your own. When the time comes to fold over the packaging at those lines, it will go much easier and you will have sharper looking corners. The image to the top right of the next page shows a scrap piece of

paperboard on the edge of the rounded electrical coverplate and a cutting board underneath. Use it to protect the surface you are working on or else it could be permanently damaged. Leave Line 3, we will take care of it shortly.

13. Now that those lines are creased, it is time to start gluing! The photo to the left is how the "Line 6" end will look once it is glued in place. Start by folding over the left and bottom flaps. Look in the corner to see if they overlap at all. If they do, trim the excess away and then repeat again with the other corner. Lightly smear glue



across the backside of the left flap, fold it over flat and in place.

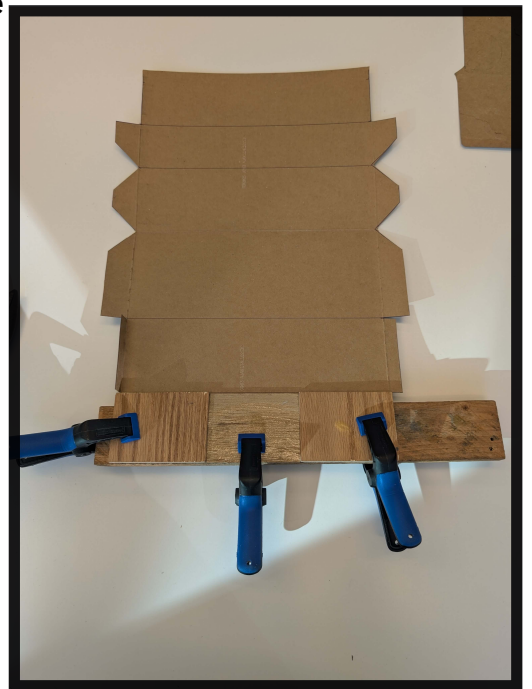
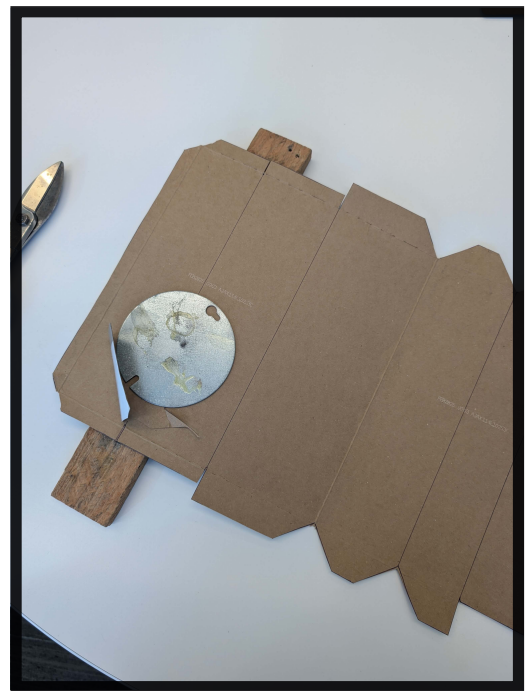
The photo to the left is how the end with Line 6 will look once it is glued in place.

Start by folding over the left and bottom flaps.

Look in the corner to see if they overlap at all. If they do, trim the excess away and then repeat again with the other corner. Lightly smear

glue across the backside of the left flap, fold it over flat and in place. Use clamps and wood like in the photo to the right or whatever you have while it dries. Repeat this process with the bottom flap and then the right one. Or, if you are feeling confident, do all three at once like I did.

14. Once that has dried, fold over and glue the two flaps next to the right and left flaps. Make sure that the tiny gap in between both left flaps and the one between both right flaps has been cut out. You will need it so that the flaps don't bunch up on each other



when you fold the lid front over at Line 5. Once that is dried it should look like the photo to the lower left.

15. Turn it around to the other end and flip the packaging over so that the graphics are facing up. Using the cut out corners on the left and right sides (Line 3), draw a line across joining them up.

16. Put your cutting board underneath and crease it graphics side up.



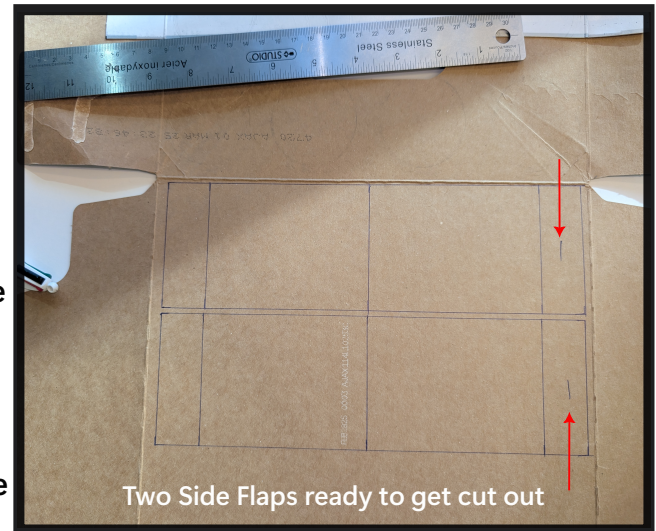
You can see how it looks in the image to the bottom left of the previous page.

17. Remember those two pieces of scrap I asked you to keep? Well grab the bigger one and your stencil. Line up the big rectangle called "Side Flaps" as close to the top left as you can. Understand that you will be drawing two Side Flaps and a Legend, so you will use up the entire piece. Looking at the Side Flaps rectangle, you will see four triangles and six small rectangles, each with one or more letter "D"s adjoining them. Trace a line on the sides that have the letter D on for all of the triangles and rectangles. It should look like the image to the right when you are done.

18. Grab your ruler and join up all of those marks creating a big rectangle and the three vertical lines inside of it. Do that one more time just below it. It should look like the image to the right.

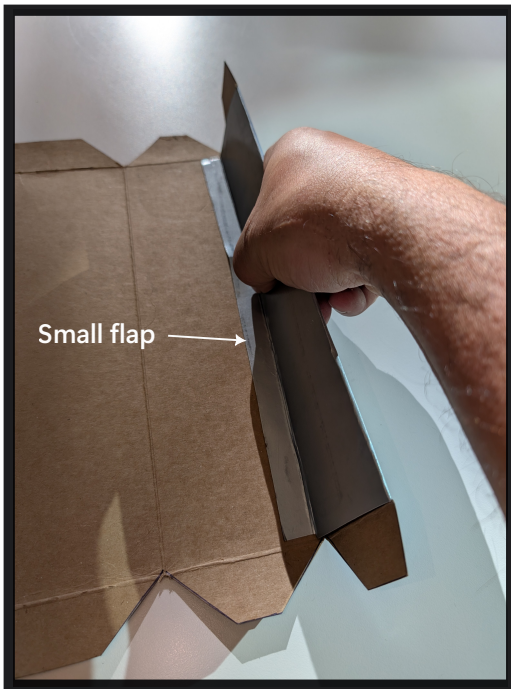
Pay attention to which end section is labelled number 1 in the Side Flaps stencil. Draw the number 1 in the same section for both Side Flaps like in the photo to the right.

19. Repeat the process again but with the Legend. It has a slightly different lay out, but the process is the same.



Depending on the size of the packaging, you may need to shrink the size of the Legend to fit or else get some extra packaging. Once completed, put them off to the side. Grab the main piece of packaging, it's time to do more gluing.

20. Fold over the 'Front Bottom In' on top of the 'Front Bottom Out.' Stand it up so that the small flap along the bottom is laying flat on top of the Bottom (just like in the photo to the left). If you like the way it fits together, unravel it and put glue all along the small bottom flap and the Front Bottom In. Fold it like in the image to the left,

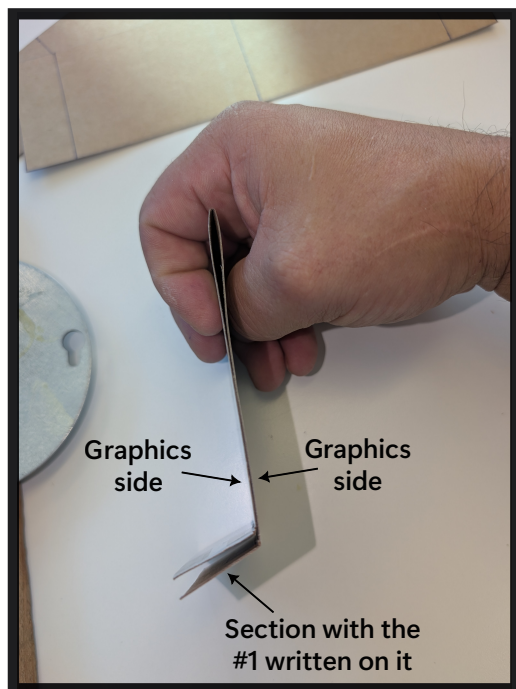


standing it up and holding in place while the glue dries. Find a way to squish the bigger sections flat against each other and the smaller flap flat against the bottom. Oh and try not to smear any glue from the bottom flap anywhere. The image to the lower right shows how I held it in place while it dried. I used the cutting board and small pieces of wood on the other side. Before clamping it down I pushed the cutting board down on the smaller flap to push it down on the Bottom.

While you are waiting for that to dry, grab the big piece of scrap you drew the Side Flaps and Legend on.

21. Cut out all three pieces.





Using your cutting board and round electrical coverplate, crease them on all of their vertical lines (graphics side down). You can see them in the image to the right.

22. Fold both Side Flaps over on the creases like in the image to the left.

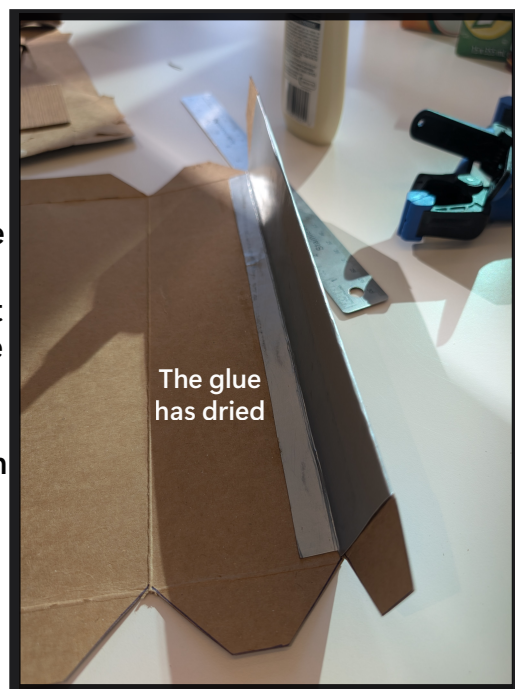
The graphics side is facing outward on both sides so that you do not see any of the non-graphic side. The section with the number "1" on it is a little bit



lower and will be glued to the underside of the deck case.

23. By now the glue should have dried and packaging should look like the second image on the right. Notice how both glued sections are nice and flat and that there are three flaps sticking out on each side. They will be squished and glued inside the Side Flaps. But first

dry fold everything into place like in the photo to the left just so you can see how it will all magically come together. You can even grab one of the Side Flaps and fit it in place as well. Put the number 1 section underneath the deck case and the other end inside.



Practice figuring out how to get all of those flaps sitting where they need to be. To show you how it should look when you have everything in place, take a look at the image of the completed deck case to the lower right.

The three flaps on the sides of the packaging are glued inside the Side Flaps. So take your time and figure out the best



way to do this.

I glued the entire backside of the Side Flap and then fitted everything together, trying not to smear any glue where it shouldn't be. This can be difficult the first few times you attempt it, so feel free to practice a few times before adding the glue. It is important that you get this right, especially before the glue dries, otherwise you might ruin all of your work. I have added a few more images and suggestions on the next page.



I held the Side Flap in place with the small pieces of wood and two clamps, like in the photo to the right. Before clamping it I made sure that all three flaps that go in the middle were tightly nestled in, that the flap on the bottom was tight against the outside and bottom of the deck case and the same for the flap on the inside. When I placed the small piece of wood on the inside, I pushed it down firmly on top of the flap glued to the inside bottom. Once I was happy that everything was in place, I clamped the two pieces of wood together, continually making adjustments where needed. I also put in a deck box full of cards on each end to make sure that they will fit in once the glue dries. As you can see in the image to the lower left, I did both sides at once.

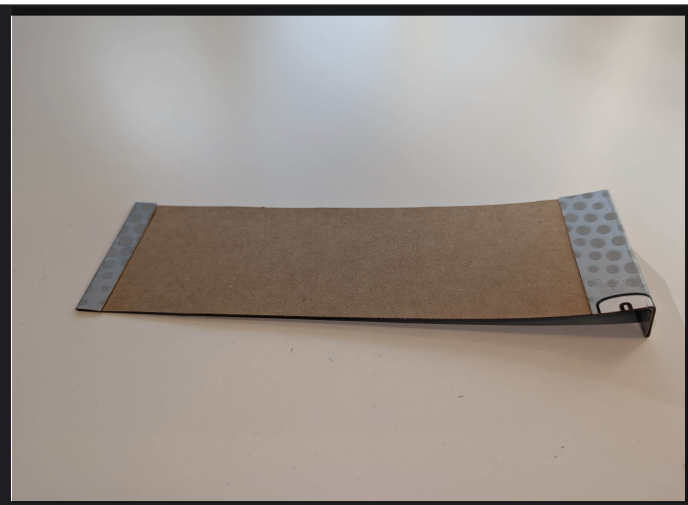
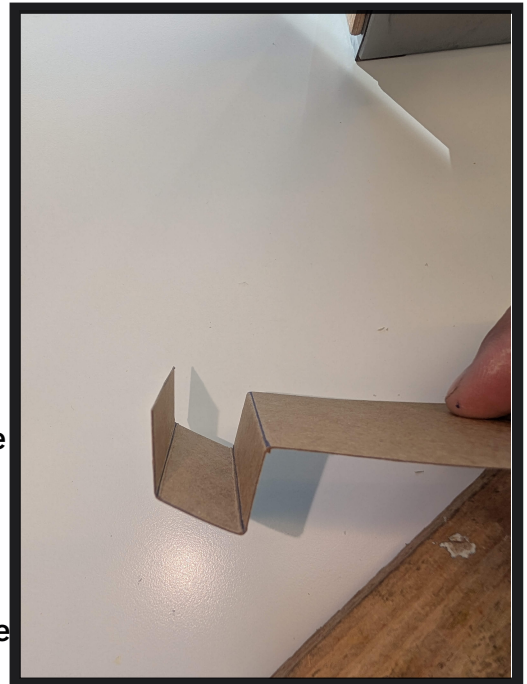


If you don't have any clamps to hold the Side Flaps together while the glue dries, use two deck boxes filled with cards; one on each side of the Side Flap. Just hold them in place until the glue dries. However you want to do it, figure out your plan, have all of the extra materials (glue, clamps, deck boxes) in front of you and ready to go so that when you do start gluing it together you don't have to worry about anything else but fitting everything together. Make sure that the three packaging flaps are tucked inside the Side Flaps nice and tight, otherwise you will see

that in the finished deck case and your deck boxes will be loosely sitting inside it.

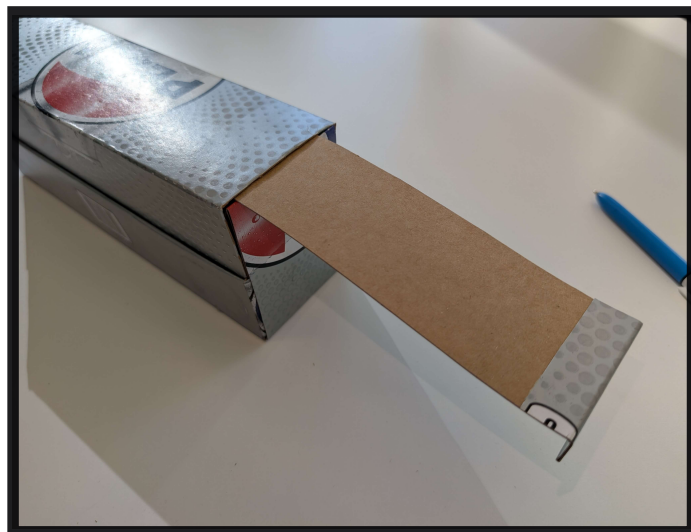
Once you get both Side Flaps glued in place the deck case is finished! All that is left to do is make the Legend.

24. Grab that last piece of paperboard that you drew on and cut out. Crease all four vertical lines. If you only have three, look on the opposite end and draw a line joining the tops of both triangles about a quarter inch in from the end.
25. Fold over the creases like in the image to the right and then glue it together like in the photo to the lower left. If you look at the Legend on your stencil, you will see that there are five different



sections. In the image to the right you can see the first four of them. The section on the left side being #1 and the big one to the right #4. Sections 2 and 3 are glued together and so are sections 1 and 4. Once again, this can be seen in the image to the left. From that image, you can see how section #5 is glued onto the other end of section #4.

The Legend is where you write the names of your decks. It sits under your lid. Pull it out to see what is in there instead of opening up the lid. And that is it!



The Cardboard Stencil Company

Download everything to create this deck case 100% free of charge.

Learn to how to make cool deck boxes for your favorite trading card games and with your favorite food and drink packaging!

Purchase all 22 different deck box size stencils from 40 to 120 cards, with non-sleeved, single sleeved and double sleeved options!

Never have to buy another deck box again!

Visit us at www.cardboardstencil.ca. Or on Facebook, YouTube and more.

We have all kinds of videos showing you how to make everything that we have to offer, including this deck case.

